



global environmental solutions

**RHINO OIL & GAS EXPLORATION SOUTH AFRICA (PTY) LTD**

ENVIRONMENTAL IMPACT ASSESSMENT FOR THE EXPLORATION  
RIGHT FOR PETROLEUM ON FARMS IN THE MAGISTERIAL  
DISTRICT OF PIETERMARITZBURG, KWAZULU-NATAL

**PUBLIC SCOPING MEETINGS**

**2 - 6 November 2015**

(PASA Ref No. 3/11/291 ER)

**PURPOSE OF MEETING**

- Provide an overview of the project
- Detail the environmental assessment process
- Record issues and concerns
- Obtain input on:
  - environmental sensitivities
  - potential impacts
- Detail the way forward for Scoping/EIA

global environmental solutions



## INTRODUCTION

- In terms of the Mineral and Petroleum Resources Development Act (MPRDA), the State is the custodian of all minerals.
- Rhino Oil & Gas Exploration South Africa (Pty) Ltd has made an application for an **exploration right (ER)** for petroleum in terms of Section 79 of the MPRDA.
- Rhino O&G must obtain an **environmental authorisation** in terms of the National Environmental Management Act, 1998 before the ER can be granted.

global environmental solutions

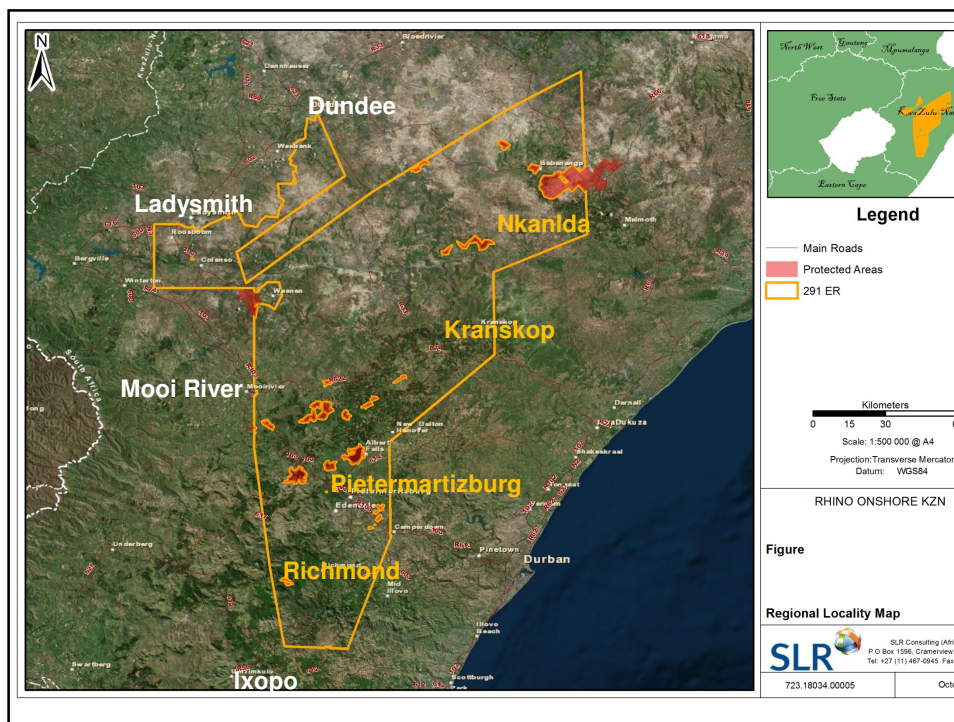


## INTRODUCTION

- The ER, if granted, will allow Rhino O&G to undertake exploration for 3 years.
- The approval would only be for the methods proposed on the included properties.
- The proposed exploration work is solely to identify if a resource exists.
- No extraction/testing/stimulation/fracking of gas or oil is proposed

global environmental solutions





## PROJECT OVERVIEW

- ER covers ~10 000 farm portions over an area of 1 500 000 ha.
- As per S48 of MPRDA, will exclude all:
  - Residential areas
  - Railways, roads, cemeteries
  - Public or government use
  - Protected areas (NEMPAA).

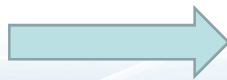
- Local map – per meeting area

global environmental solutions



## APPLICANT AND PROJECT

Rhino Presentation



global environmental solutions



## ENVIRONMENTAL PROCESS

### Why?

- Legal requirement to MPRDA and NEMA
  - Scoping and EIA process to inform environmental authorisation
- The Petroleum Agency South Africa (PASA) is the designated authority for Petroleum.
- SLR Consulting is appointed as Environmental Assessment Practitioner.

global environmental solutions



## ENVIRONMENTAL PROCESS

### What?

- Define proposed project and alternatives
- Understand the affected environment
- Assess the potential impacts of the project on the environment
- Identify appropriate management measures.
- Present findings to inform authority decision

global environmental solutions



## ENVIRONMENTAL PROCESS

### How?

Process defined in 2014 EIA Regulations.

- Notification and consultation with interested and affected parties
- Possible specialist investigations
- Reporting (Scoping and then EIA/EMP)
- Decision making by authority
- Appeal

global environmental solutions



Make Application  
(Day 1)

Submit Scoping  
Report (by Day 45)

Incl 30 days Public review

Authority accept/refuse  
Scoping (day 88)

Submit EIA Report  
(by Day 194)

Incl 30d Public review

Authority makes decision  
on EA (by Day 300)

Appeal Process



## CURRENT ER SCHEDULE

- Apply for Environmental Authorisation (Nov 2015)
- EA decision (~mid-Sept 2016)
- Decision on Exploration Right thereafter
- Commence 3 year exploration work programme (end 2016 to end 2019).
- Each work stream may lead to:
  - A stop/go decision.
  - Where to locate next work.
  - What areas to exclude/relinquish.

global environmental solutions



## ENVIRONMENTAL PROCESS

### Who is involved?

- Landowners, land users and lawful occupiers
  - Non-governmental organisations, parastatals
  - The public
  - **Department of Mineral Resources (via PASA)**
  - Department of Economic Development, Tourism & Environmental Affairs
  - Department of Water and Sanitation
  - Department of Agriculture, Forestry and Fisheries
  - National/Provincial Heritage body
  - Provincial Conservation Authority
  - District Municipalities
  - Local Municipalities
  - Ward councillors
  - Traditional authorities
-

## ENVIRONMENTAL PROCESS

### Notification process

- Adverts, notices, letters, BID.
- BID provides information so that people can participate meaningfully.
- Challenges in sourcing contact details for land owners over so many farms.
- Referrals by notified people and press coverage vital.
- Process is on-going and will continue in EIA.

global environmental solutions



## ENVIRONMENTAL PROCESS

### Scoping report (due in November) will:

- Document the issues and concerns raised and detail the issues to be investigated further.
- Set out how these investigations will be performed.
- Be the “Agreed approach” between the public, authorities and the project team.
- IAPs will have 30 days to review.

global environmental solutions





## ENVIRONMENTAL PROCESS

### EIA/EMPr report (due after approval of Scoping)

- Understand key sensitivities of the area.
- Identify potential risks/impacts of exploration activities.
- Assess how the proposed activities would impact the environmental aspects of the area.
- Determine management and mitigation measures
- Inform authorities to make a decision

global environmental solutions



## ENVIRONMENTAL PROCESS

### EMPr (submitted with EIA)

- Adaptation of exploration methods to take account of local sensitivities and concerns.
- Prevent exploration activity at incompatible sites.
- Set out the management measures under which exploration must be conducted to prevent unacceptable environmental impacts.
- EMP and authorisation conditions are legally binding.

global environmental solutions



## STATUS OF EXISTING ENVIRONMENT

During the scoping process, and with inputs from I&APs, the status of the environment will begin to be understood.

Relevant aspects include :

Environmental aspects for consideration	
Soils and land capability	Land use
Topography	Heritage/cultural resources
Surface water	Groundwater
Air quality	Biodiversity
Visual	Socio-economic
Noise/Vibration	

global environmental solutions



## POSSIBLE MANAGEMENT MEASURES

- Recommend **exclusion** areas from ER
- Define '**no-go areas**' and '**buffers**' in ER through selection of sensitivity criteria.
- **Detailed assessment** of each target sites prior to establishment to select areas of no/low sensitivity.
- Negotiate **access agreement** with land owner prior to use.
- **Rehabilitate** all disturbances

global environmental solutions



## QUESTIONS OR COMMENTS

global environmental solutions



## WAY FORWARD

- Distribute draft Scoping report (mid November)
- Regulatory authority and public review (30 days)
- EIA investigations (next 3-5 months)
- Distribute draft EIA and EMP report (~ April/May 2016)
- EIA feedback Meetings (~ April/May 2016)
- Regulatory authority and public review of EIA (30 days)
- Distribute record of decision (~ 3<sup>rd</sup> quarter 2016)

global environmental solutions



## LOGISTICS

### Environmental reports:

- Full reports in English
- Summaries in English / Zulu

### Summaries :

- Distributed via e-mail /post

### Report availability:

- Local Public Libraries
- Municipal offices
- **Where else?**
- Project website
- Electronic on CD (if requested)

global environmental solutions



THANK YOU

CLOSE

global environmental solutions

